

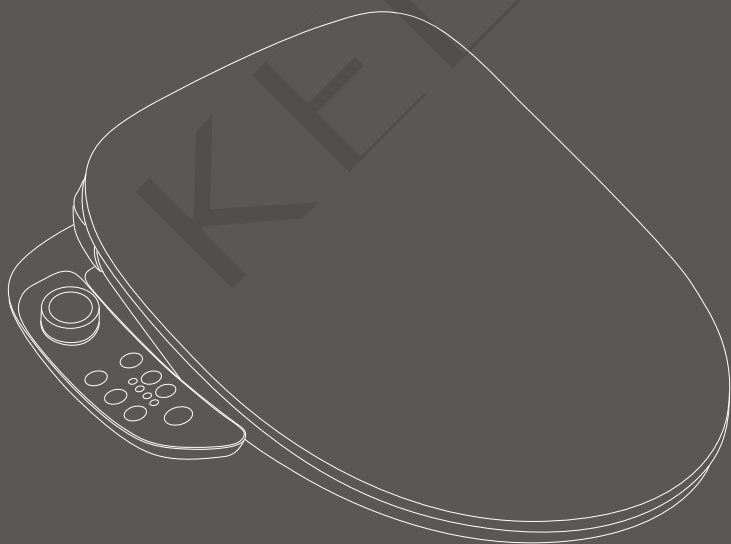


IntelligentToilet

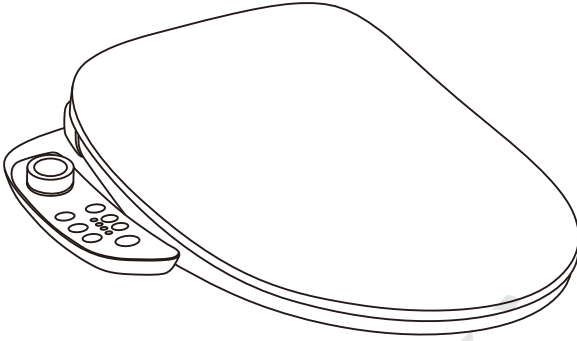
INSTRUCTIONS FOR THE USE OF PRODUCTS

Smart Toilet Cover

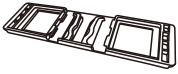
Automatic Intelligent Toilet



Note:gearing and use before please to cautiously read this manual
Please the warning and regulation of obeying the product manual inside marking



Intelligent toilet seat



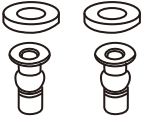
Fixed plate



Adjust piece



Bolt



Nut



Water inlet pipe
assembly



Manual

Matters needing attention

In order to avoid personal injury and property loss to users and others, please read the following safety instructions carefully and strictly observe them. After reading, please keep this instruction manual in a conspicuous place.



PROHIBIT

1. A lighted cigarettes and other combustions should not be put into the toilet cover, otherwise it may cause fire.
2. Do not disassemble, repair or modify the product by yourself. Otherwise, fire or electric shock may occur.
3. Do not pour water, detergent, urine or other liquids on the body or power plug. Otherwise, fire or electric shock may occur.
4. Do not touch the power plug with wet hands; otherwise, electric shock may occur.
5. Do not use power extension cables or loose power sockets. Otherwise, fire or electric shock may occur.
6. Do not put or block the warm air drying outlet with your fingers or other objects. Otherwise, burns, electric shock, or burning may occur.
7. When the product is powered on, do not put the product on its side or upside down, otherwise it may cause fire or burn.



NOTICE

1. When there is thunder, unplug the power .
2. Do not place the product in water or other liquids and where it may fall into or be pulled into the bathtub or sink.
3. Do not touch the product that has fallen into the water or soaked in water, and pull out the power plug immediately.
4. Do not apply force or impact, do not stand on the ring, cover it, and do not place heavy objects.
5. Do not press or lean on the stool cover to avoid damaging the product.
6. Do not use banana water, gasoline, potions and detergents, insecticide, toilet cleaner and stiff brush to clean this product.
7. Do not use industrial water, waste water, sea water, intermediate water and other water sources, otherwise it may cause skin inflammation and other diseases.
8. Do not allow direct sunlight to the product, in order to avoid discoloration and temperature instability caused by burns.
9. Do not connect the water inlet pipe to the water outlet pipe of the water heater. Ensure that the water inlet temperature ranges from 4 ° C to 35 ° C.
10. The newly decorated house is easy to damage the machine and affect human health due to the residual mud, sand and other SUNdry things in the pipeline, please remove the sewage in the pipeline before installation.
11. Do not install the product in a place where the humidity exceeds 90%RH.
12. The operating environment should be separated from dry and wet, such as installing shower room or shower curtain.
13. The socket must be installed in the place where water is not easy to be doused. It is recommended to use a waterproof socket.

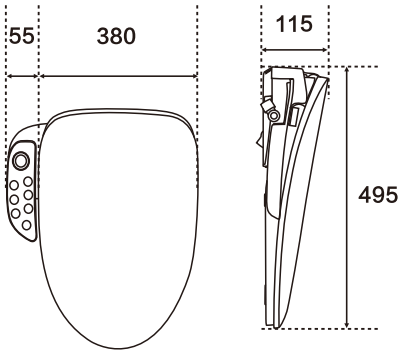


Must Obey

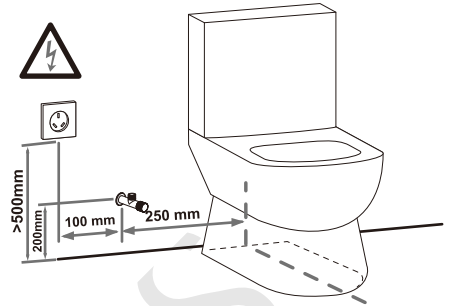
1. Persons (including children) with physical, perceptual, intellectual disabilities or lack of experience and common sense need to use this product under the supervision of a person.
2. Do not allow children to play with this product.
3. The grounding cable of this product must conform to the prescribed construction mode, and the three-level grounding structure must be reliably grounded. Otherwise, it is forbidden to use the stool cover.
4. This product must be connected to 220V~/50Hz, ensure that the socket and power cord can meet the current of 10A.
5. The new hose assembly that comes with it must be used during installation. The old hose assembly cannot be reused.
6. When installing, removing, repairing and maintaining the product, unplug the power supply and close the water supply valve.
7. To prevent damage from freezing, keep warm.
8. If the room temperature is lower than 0°C, it is recommended to pour out the water inside the product to prevent freezing crack inside the product.
9. When not in use for a long time, please pull out the plug and pour out the water in the filter and product.
10. Do not supply water or power to the product before the installation is complete.
11. After the appliance is scrapped, please give it to a qualified professional recycling company or institution for disposal. It should not be discarded casually to avoid harm to the environment.

Installation Instructions

Product Drawing Line



Suggestions for connecting the power supply and water supply



The pictures in this manual are for reference only, please subject to the real product.

Tools Preparation

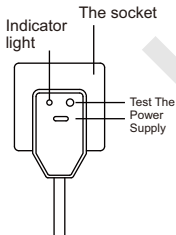


Note:

* In the room where the product is installed, A water stop valve needs to be installed in a place where it can be used in emergency situations. You can cut off the water path of this product without using a tool. otherwise, the accidental failure of this product may cause property damage to the user

* This product has been tested before leaving the factory, and a small amount of residual water may drip out when the product is taken out, which is not a fault.

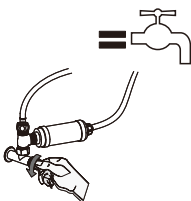
Connect the power supply:



1. Plug in the socket, press the reset switch, the plug indicator lights up, the product is energized and starts to initialize, and the product enters the standby state.
2. Press the test button to turn off the indicator light, and the product is powered off. Press the switch again, and the product is powered on again.

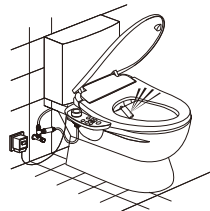
Warning:

1. When the power switch does not work properly, check for any leakage
2. The earth leakage protection plug protects only the product connected to the power supply through the plug, when using other electrical devices, the product can not guarantee the leakage protection of other products, and the product can not replace the basic safety measures of other electrical devices.
3. Do not connect the live wire to the ground directly, and test the leakage protection function of the plug.



Confirm Water Supply

Turn on the valve switch

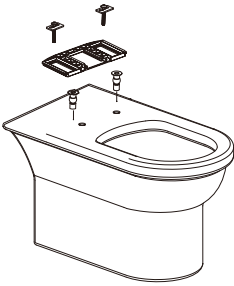


Operation Testing

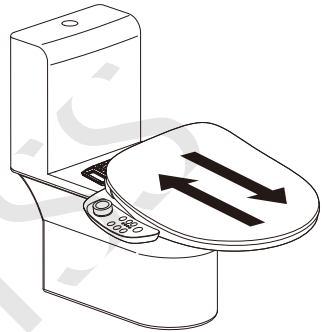
Start the hip/female washing after seating, check if it can work properly

Installation Instructions

1. As shown in the figure, install the nut, the fixing plate, the test screw of the fixing plate for installing the toilet cover on the ceramic, and the adjusting piece into the ceramic installation hole of the toilet in turn until they are tightened to 70%.



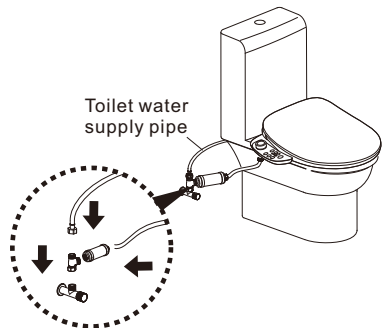
2. Install the toilet cover on the fixed plate installed on the ceramic body, adjust the position, and tighten the expansion screw.



3. Align the bottom of the toilet with the slot of the fixing plate, and push it in horizontally until you hear a "click" sound.

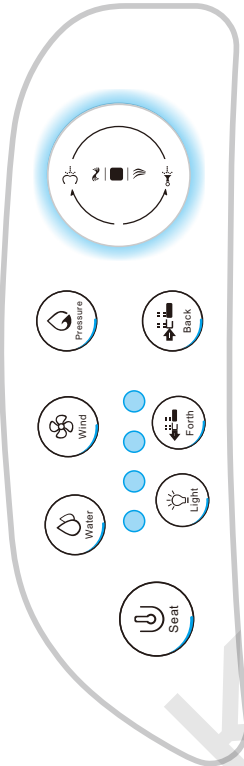


4. Install the tee to the angle valve, connect the toilet water supply hose and filter to the installed tee, and connect the cleaning water inlet hose to the toilet cover.



Handle control instructions

Note: Please read the following contents carefully when you can't use it



ON/OFF



Turn on or off the power supply of the whole machine.
Stop the running functions

Nozzle Forward



During "hip" or "female" spraying, the position of the nozzle can be adjusted forward when the mobile wash function is not in use.

Hip/Moving



The nozzle automatic spray 2 minutes for hip washing , and operate it again and will start the moving washing .

Nozzle backward



During "hip" or "female" spraying, the position of the nozzle can be adjusted backward when the mobile wash function is not in use.

Female/Moving



The nozzle automatic spray 2 minutes for female washing , and operate it again and will start the moving washing .

Wind



4 degrees can adjust the wind temperature the temperature can be set as , one degree : the environment temperature, second degree: about 93°F , Third degree : about 96°F, Forth degree : about 99°F .

War Air



Start the warm air drying , automatic stop after 3 minutes

Water



4 degrees can adjust the water temperature , the tempature can be set as , one degree : the environment temperature, second degree : about 93°F , Third degree : about 96°F, Forth degree : about 99°F

Water Pressure Adjust



The strength of the washing water pressure can be adjusted. The washing water pressure can be set to weak, medium, strong and maximum.

Seating



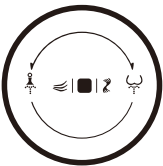
4 degrees can adjust the seat temperature the temperature can be set as ,one degree : the environment temperature, second degree : about 93°F , Third degree : about 96°F, Forth degree : about 99°F .

Night Light



When the machine is turn on , can turn on /off night light

Side Knob Using Instructions



Power on/off: Press the knob for more than 3 seconds

Stop: Press the knob once

Hip cleaning: switch the knob to the right

Warm air drying : press the knob for one time when seating

Female cleaning : switch the knob to the left

Nozzle cleaning : switch the knob to the female washing for 3 seconds

Safety directory

Please cautiously read before installing and using.

Warning-To avoid electric shock

1. Do not place the product where it may get wet.
2. Do not drop the remote control into the water.
3. Do not spray water into the product or plug.

Warning: To prevent the possibility of burns, electric shocks, fires and injuries.

1. Young children, temperature insensitive users, when using this product, should be accompanied by others. And turn off or lower the seat temperature.
2. The product is limited to the function on the manual, do not use other equipments.
3. Do not continue to use when the product is out of order, damaged or flooded. Please send the product to the designated repair center for repair.
4. Please make sure that the wires are not damaged by burning.
5. Do not use this product when you are out of your mind.
6. Do not plug the product or pipe.
7. Do not use outdoors.

Please be sure to observe the following

Please don't sprinkle urine at the essence and spray.

Pull out the plug when it thunders.

Strictly forbid to directly flush with water.

Please do not wipe seat and cover with dry cloth or toilet paper.

Please do not open the seat ring or cover violently.

- May cause cracking or malfunction.



Please take antifreeze measures to prevent damage caused by freezing.



Please do not put heaters near this product.

- Discoloration or malfunction will occur



Safety Caution


Note: please cautiously read before using

Please read carefully before using. The cautions listed here are related to safety and please follow. 

This product is an electrical product. Please do not install it in a place where it is easy to be splashed by water or high humidity. When using in the bathroom, please install a vent to keep good air flow in the bathroom.

The socket for power distribution should be set as follows

- The gearing position of electric outlet pleases to give examples 0.3 min the ground above, and leave bathtub as far as possible a little bit farer.
- The back track of electric outlet pleases use a high feeling and rapid type electric leakage switch (the sum certainly responds the electric current 15 mA following) or use to insulate the transformer 1.5 KVA above, the 3 KVA is following) carry on a protection.

 The product connects a ground of line to carry on to connect a ground of processing, if has never carried on to connect a ground of processing, may arouses to get an electric shock.

Note: the grounding treatment mentioned here means that the grounding resistance is below 100Ω, and the grounding wires of the switchboard shall be copper wires with a diameter of more than 1.6mm.

While using in the bathroom please confirm the power plug have already used silica gel to carry on a waterproof processing.

Examples and illustrations of ICONS



It is not feasible (prohibited). The image on the left shows (disassembly is prohibited).



Represents something that must be (enforced). The left-hand diagram shows (must comply).



Must obey

Notice heat burn

- Please turn the seat temperature down or off when sitting on the toilet for a long time.
- Please set the temperature to room temperature when the following persons use the seat to dry gently.

- Children, the elderly, the sick, the disabled, etc.
- People who take sleeping pills, get drunk and get overtired.

Do not use any power source other than AC 220V/110V

- It may start a fire

Keep cigarettes and other fire kindling away from the product

- It may start a fire

Do not use loose and unstable power sockets

- It may cause fire or electric shock

Please don't sprinkle water or rinse on product essence or the power plug.

- May arouse a fire or get an electric shock
- May cause toilet break, damage or indoor seepage.

When long time didn't use, please pull out the power plug.

- For safety, please pull out the power plug
- For re-use, please drain water for one minute before use.

Please do not flush other items except for urine and feces

- May cause then block, sewage outside overflows.

Do not unplug the power plug with wet hands

- It may cause electric shock

Do not distort or damage the water inlet

- It may cause a leak



Prohibit

Do not continue to use the product when it breaks down

When the following occurs, please unplug the power plug, close the inlet Angle valve, stop the inlet.

- Ceramic WC is leaking
- Cracks appear
- Abnormal sound and smell
- Fume-off
- Abnormal heating
- The toilet is clogged

- If continued under the condition of failure, it may cause fire, electric shock or indoor seepage problems

Do not disassemble, repair or transform the product without permission

- It may cause a fire or electric shock

Do not install this product in damp places such as bathrooms

- It may cause a fire or electric shock

Do not damage the power cord or toilet seat cable

- Don't pull
- Don't process
- Don't heat
- Don't forcibly bent
- Do not place heavy objects on the power cord and toilet seat connection line.

- May cause fire, electric shock or short circuit. If the power supply is damaged, please contact a professional for repair.

Do not use extension wires, otherwise, it may cause a fire or electric shock

- Do not connect wires or use extension cords, which may cause fire and electric shock.

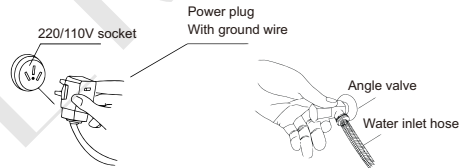
Do not use unhealthy water

- May cause skin irritation and other problems

The first use of Intelligent toilet

Note: To ensure the normal use of the product, please follow the instructions to text.

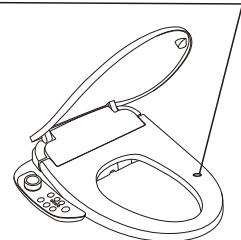
- 1.Insert the power plug into the AC (AC) 220/110V socket
- 2.Please confirm whether the indicator of the digital display panel is lit
- 3.Confirm whether the inlet valve is take on
- 4.Whether the hose between the wall Angle valve and the toilet inlet valve is installed in place



Caution-Confirmed matters before using

- 1.Check whether the sprinkler head and water pipe leak, dry all parts of the water pipe and check with blotting paper.
- 2.Press the seat around the seat sensor, whether there is a sound.
- 3.Check whether the cleaning, drying, automatic deodorization and automatic flushing are normal
- 4.Whether the Damped structure is normal.

Seating sensing position



Check the functions of cleaning, drying and automatic deodorization, make sure the sensor is on. When cleaning, cover and block the spray nozzle, so as not to splash.

Warning - Be sure to firmly connect ground wires

The power plug of this product is a three-phase plug (with ground wire). There is a danger of electric shock when there is a fault or leakage of electricity. If there is no ground plug in the socket, consult with the electrical installation company. Do not use power supply other than AC 220V/110V, please wiring according to relevant regulations.

Using the wrong power supply can easily cause fire

Daily cleaning and maintenance

Note: During cleaning and maintenance, please be sure to unplug the power switch and power off

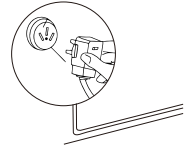
Smart toilet cleaning and maintenance methods

Please wipe it with a soft cloth dampened with water

- If the dirt is not removed in time, it will become difficult to clean, please wipe with water sometimes.

- Static electricity will absorb dust, resulting in the product black, dirty, water wipe can prevent the generation of static electricity.

- The ceramic body can be removed from the toilet seat to facilitate cleaning between the toilet seat and the ceramic body.



Unplug the power supply before maintenance

Cleaning and maintenance of spray head

If there is dirt in the nozzle. Please clean it with a small brush such as a toothbrush.

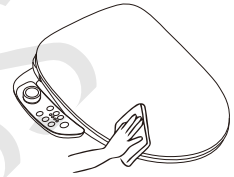
- Do not stretch and bend the spray head.



Clean the dust on the power plug regularly

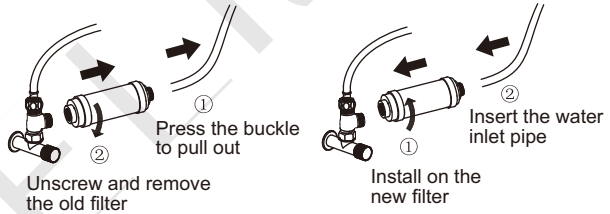
When cleaning, remove the power plug and wipe with a dry cleaning cloth.

Must obey - Poor insulation may cause a fire.



Filter replacement

It is recommended to replace it after using for 4 to 6 months filter replacement (depending on local water quality.)



Common fault diagnosis

Note: If similar fault is found, please read the following solution or contact after sales

Fault phenomenon	Fault analysis	Fault handling
Product unavailable	Check to see if the power/socket is loose	Please check the circuit
	Whether there is leakage (the display light of leakage protection plug is not on)	Remove the power plug from the socket and replug it later. Press the reset switch of the leakage protection plug. If the elbow still cannot be operated, please unplug the power plug and entrust the repair.
No water with spray	Check if water is cut off	Pending resumption of water supply
	Check that the Angle valve is closed	Open the Angle valve
	Check if the inlet filter is blocked	Clean or replace the filter
	Check the inlet pipe for bends	Exclude the intake bend
Cleaning insufficient rigidity	Check whether the cleaning pressure is at the lowest level	Refer to the instruction manual for regulating the water pressure
	Check if the inlet filter is blocked	Clean or replace the filter
Spray water disorderly	Abnormal operation	Unplug the plug for one minute and then switch it back on

Fault phenomenon	Fault analysis	Fault handling
water temperature is not enough	Check that the water temperature is set low	Adjust the water temperature according to the instructions
	Whether the hot and cold massage function is on	Turn off the hot and cold massage function according to the instructions
The washer often drips water	Solenoid valve failure	Please get professional maintenance technicians
Misoperation of remote control(Optional Matching)	Check the battery level of the remote control is it too low	Please replace the battery
Drying/seat temperature too low/no heating	Check whether the temperature is set at low or normal temperature	Adjust the temperature according to the instruction
	Whether to turn on the power saving function	Refer to the manual to choose to turn off the power saving function
Seat/ cover falling too fast	Failure of damping drop function	Please get professional maintenance technicians
The cleaning function cannot be used normally	Is there any other hard material holding it under the seat	Remove the hard objects
	Whether the body's sensing area is covered	Adjust the body sensing area of the seat cover
	Whether the power supply is restored during the power failure	Unplug the plug for one minute and then switch it back on
	The skin completely cover the human body induction area of the seat	Sensor failure, please get professional maintenance technicians
The whole toilet cover is loose	The screws on the fixing plate are not tightened or become loose after later use	Retighten the screws and refer to the installation instruction
No response from key/knob	Some features have precondition	Please take a seat first and refer to the instruction manual for details
	Some functions have delayed activation	Please refer to the instruction manual for details
The power supply is no electricity	The socket did not connect the electricity or the knob is not turned on	Unplug the plug and plug it in again.

Product standard

Rated voltage	Alternating voltage 220V/110V±10%, 50HZ/60HZ		
Rated power	Water inlet temperature: 59°F Water discharge: 750ml/min		Outlet water temperature: 99°F Power: 1200W
Cleaning	Water outlet	Hip cleaning	About 700 ml/min
		Female cleaning	About 700 ml/min
	Outlet water temperature		Normal temperature, and 93°F/96°F/99°F (4 grades)
	Water heating		Instant water heater
	Heater power		Water inlet temperature: 59°F , Outlet water temperature: 99°F Water discharge: 750ml/min Power: 1200W
Seat heating	Seat temperature		Normal temperature, and 93°F/96°F/99°F (4 grades)
	Heater power		40W
Warm drying	Wind temperature		Normal temperature, and 93°F/96°F/99°F (4 grades)
Spray position			Adjustable Fore and Aft
Water temperature			41~99°F
Water Pressure			0.06 Mpa - 0.75 Mpa

Due to the different printing time of the materials, the product specifications may be slightly changed. Please refer to the material object.